

Per map overleaf:

1. TOWN HALL

Rebuilt 1806 by Thomas Baldwin of Bath it has a fine assembly room on the first floor with Adam decoration. The very impressive town regalia dating from the 17th Century are on show inside the entrance whenever the Town Hall is open.

2. CORN EXCHANGE

The Town's biggest venue which hosts many events throughout the year including a regular Thursday collector's market.

3. SHAMBLES COVERED MARKET

Built in 1835 this was the original meat, poultry and butter market. It still serves a similar purpose today with general and specialist markets held throughout the week.

4. HILLWORTH PARK

The town park with gardens, café, aviary, play and events areas.

5. MARKET PLACE

Home to the regular Thursday produce and general market and to many events at weekends and Bank Holidays throughout the year.

6. WILTSHIRE MUSEUM

Gold from Stonehenge. Internationally acclaimed archaeology from the dawn of time, through Roman to Medieval, Gallery devoted to the town. Archive and Library. Art and special exhibitions, events, activities and talks. Recent national acclaim for new galleries.

7. WADWORTH BREWERY & VISITOR CENTRE

The visitor centre provides a display of brewing through the ages with an opportunity to sample the ales produced. Conducted tours are available of the brewery and stables. The shire horses deliver beer to the inns and pubs around the town most weekdays.

8. KENNET & AVON CANAL TRUST MUSEUM

Shows the construction, operation and restoration of the canal. Café.

9. DEVIZES CASTLE

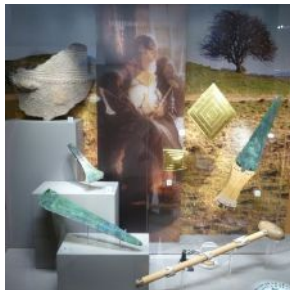
Originally built in 1080 it was demolished by Parliamentary Order in 1646. Rebuilt on the original foundations in Victorian times and now split into private apartments. Not accessible to the public. The best views can be had from St John's Churchyard.

10. CAEN HILL FLIGHT OF LOCKS

Take a walk by the flight of 29 locks which are one of the seven wonders of our inland waterways and over 200 years old. The flight starts a quarter of a mile from the town centre.



Wiltshire Museum and Gold from the Age of Stonehenge exhibit



Attractions in Devizes

Historic Centre

There were people here in prehistory and a Roman villa once stood on The Green. Stroll through the historic centre with numerous listed 18th century and medieval buildings. Browse the interesting shops, many of which are independent, including antique sellers, explore the nooks and crannies such as The Ginnel (right) and the many cafe's pubs and restaurants. Town trail guidebooks etc available.



Wiltshire Museum

Home to the best Bronze Age Collection in Britain. Includes finds from around Stonehenge including the famous Bush Barrow gold. Ten galleries chronicle the history of Wiltshire over 500,000 years. Temporary exhibitions. Open Mon-Sat 10am-5pm & Sun 12pm-4pm.

Wadworth Brewery

The Brewery Visitors Centre open 10am-5pm Monday to Saturday except Bank Holidays. Includes a shop with bottled and draught beers, branded clothing and gifts. The Brewery also offers guided tours which include the Shire Horses and Signwriters, 11am and 2pm. Gold in South West Tourism Awards 2015.

Kenet & Avon Canal Trust Museum

Open 10am-4pm Mon-Fri, for weekend opening please see website or phone for information. The Museum has a lot to offer, including the chance to see historical artefacts associated with the history and heritage of the K&A canal. Nearby **Caen Hill locks** are 1 of 7 wonders of the Inland Waterways. 45 seater boat available for cruises.

Hillworth Park

A central spacious park with restored ha ha, has a modern area for Children to play and for families to sit and enjoy picnics or snacks from the on site café. Event area. Green Flag Award.

FOR MORE INFORMATION Especially of the many Events through the year: www.devizes.org.uk or visit one of the 5 staffed Visitor Information Points, (Wiltshire Museum, Wadworths, Kenet & Avon Canal Shop, Shambles and Devizes Books), marked overleaf.

General Tourism Information: **01380 800400**

Email: tourism@devizes.org.uk

Quality assessed Bed and Breakfast 365 day availability service: **01380 620660**

This is one of a range of leaflets, eg Shopping Experience and Delicious Dining in Devizes.



Visit DEVIZES

A HEADY BREW OF HISTORY,
SHOPS & CANAL BOATS

Welcome to Devizes



Thursday Market with Roundway Hill beyond



Canal Museum with trip boat and below Caen Hill Locks



St James, Crammer, adjacent to The Green. Wadworths from Market Place below.



Devizes is a medieval market town in the centre of Wiltshire, 16 miles from Stonehenge, 8 miles from Avebury. The building of a castle in Norman times dictated the layout of the town which is still visible in the 'D' shape plan today, now containing over 250 shops, 50 Heritage Plaques, 50+ eating places and tea shops, 14 traditional pubs, 5 pedestrian only shopping precincts, 3 ancient churches, 2 museums including the awarding winning Wiltshire Museum, the "Caen flight" of canal locks and a working Victorian brewery that runs tours and tastings. Frequent Gold winner of South West in Bloom and holds Coach Friendly Town status.



A342 TO CHIPPENHAM & M4 J17

A361 TO BATH

A361 TO MARLBOROUGH & AVEBURY

A342 TO ANDOVER

A360 TO SALISBURY & STONEHENGE

Kennet & Avon Canal
National Cycle Route 4
London to Fishguard



- Information
- Toilets
- Parking
- Bus stops
- Shops
- Pedestrian only
- Cycle Route
- Coach Parking

For the latest local news & events visit www.devizes.org.uk

To approximate scale. To give an indication, the walk from Museum (6) to Wadworths (7) is 600 metres. This map is a small version of maps at key locations in the centre of Devizes.

Original map for signs by Resolution Design, funded by Devizes Community Area Partnership. Print version updated by Devizes Area Tourism Partnership.